

State of Wyoming Corner Record

(in compliance with the CORNER PERPETUATION AND FILING ACT, Wyoming Statutes, 1977, Section 36-11-101, et. seq., and the Rules and Regulations of the Board of Registration for Professional Engineers and Professional Land Surveyors)

Reverse side of this form may be used if more space is needed.

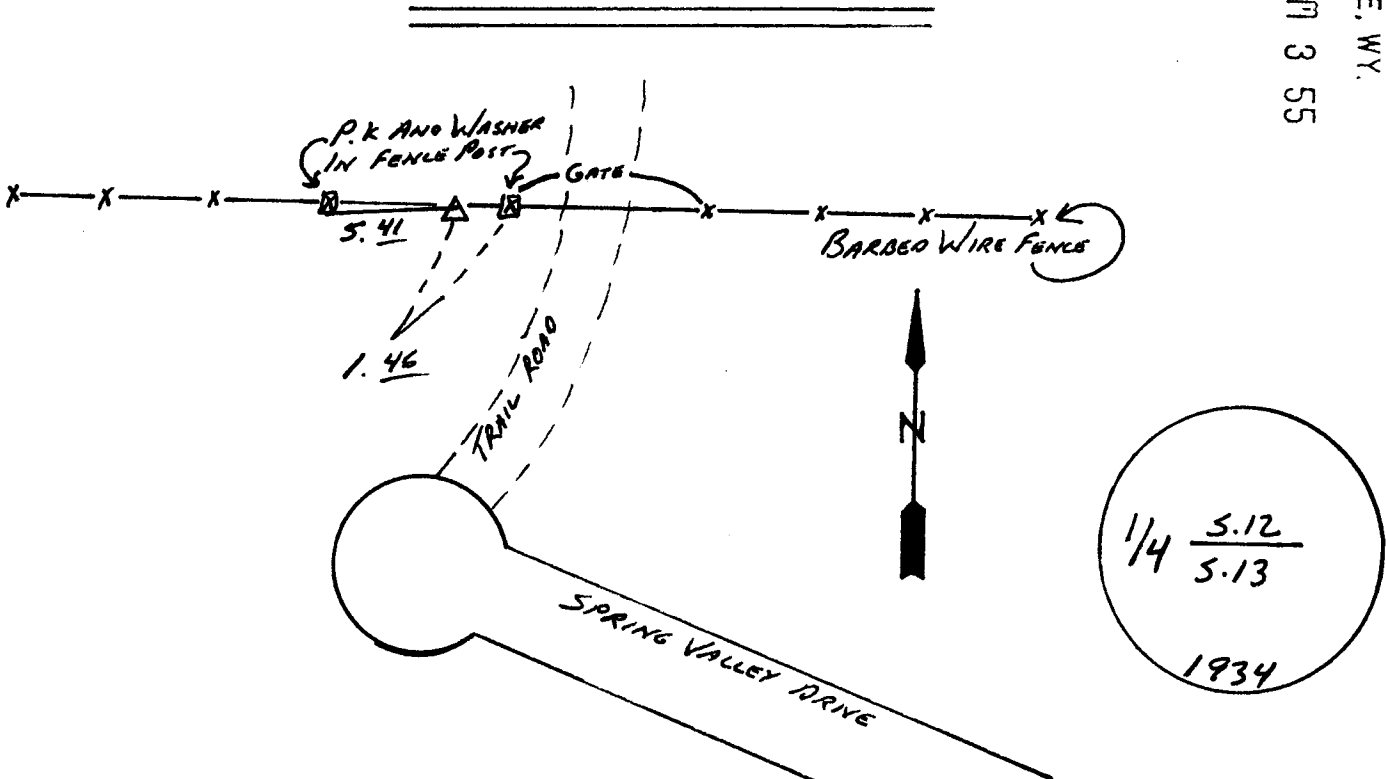
Record of original survey and citation of source of historical information (if corner is lost or obliterated). Description of corner monumentation evidence found and/or monument and accessories established to perpetuate the location of this corner. Sketch of relative location of monument, accessories, and reference points with course and distance to adjacent corner(s) (if determined in this survey). Method and rationale for reestablishment of lost or obliterated corner.

G.L.O RECORD: THE ORIGINAL 1/4 SECTION CORNER OF SECTIONS 12 AND 13,
WHICH IS A GRANITE STONE, 18"X13"X6", MARKED 1/4 ON NORTH FACE.

SET AN IRON POST 3' LONG, 1" DIAMETER, 27" IN THE GROUND, WITH ORIGINAL STONE DEPOSITED ALONGSIDE WITH BRASS CAP. RAISE A MOUND OF STONE 2' BASE, 1 1/2' HIGH NORTH OF CORNER.

FOUND: G.L.O. BRASS CAP MARKED AS SHOWN.
6" EXPOSED

173846
 LARAMIE COUNTY CLERK
 CHEYENNE, WY.
 '95 DEC 13 PM 3 55



Date of Field Work: 4-11-95 Office Reference: 95097

CROSS INDEX DIAGRAM

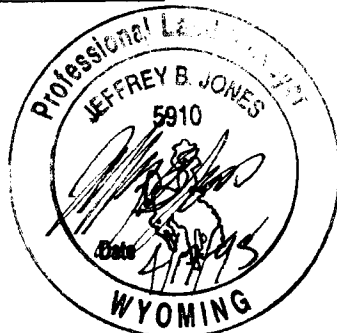
A	1	2	3	4	5	6	7	8	9	10	11	12	13	14	15	16	17	18	19	20	21	22	23	24	25
B																									
C	6		5		4		3		2																
D																									
E																									
F																									
G	7		8		9		10		11		12														
H																									
J																									
K																									
L	18		17		16		15		14		13														
M																									
N																									
O																									
P	19		20		21		22		23		24														
Q																									
R																									
S																									
T	30		29		28		27		26		25														
U																									
V																									
W																									
X	31		32		33		34		35		36														
Y																									
Z																									

Firm/Agency, Address

STEIL SURVEYING SERVICES
1102 WEST 19th STREET
CHEYENNE WY 82001

This corner record was prepared by me or under my direction and supervision.
 SEAL & SIGNATURE

Telephone Number: (307) 634-7273



BOOK 1413

Corner Name: SOUTH 1/4 CORNER Section: 12 T14N R70W 6th P.M. Cross-Index No.: J-23

0497